



Health

South Western Sydney
Local Health District

South Western Sydney Local Health District (SWSLHD)

Agency Information Guide

Agency Information Guide

South Western Sydney Local Health District's agency information guide details who we are, what we do and how members of the public, community organisations, the media and government agencies can interact with us.

About us

The District's vision is to provide a healthcare service that is patient focused, equitable and responsive to the changing and developing needs of the communities in south western Sydney.

South Western Sydney Local Health District (SWSLHD) was established on 1 January 2011, following a transition from the former Sydney South West Area Health Service (SSWAHS).

SWSLHD covers the seven Local Government Areas from Bankstown to Wingecarribee and has a population of approximately 820,000 people.

The District is among the most rapidly growing populations in NSW and projected to grow to more than a million people in the next decade. It is also a vibrant, culturally-diverse region with almost a third of its population speaking a language other than English at home.

Our hospitals

The District covers both rural and suburban communities and manages six acute public hospitals:

- Bankstown-Lidcombe Hospital
- Bowral and District Hospital
- Campbelltown and Camden Hospitals
- Fairfield Hospital
- Liverpool Hospital

Our services

Oral Health, Drug Health and Mental Health services are provided at a number of facilities across the District.

Affiliated Health Services include: Karitane, Braeside Hospital, Carrington Centennial Care, NSW Service for the Treatment and Rehabilitation of Torture and Trauma Survivors and Sydney South West Scarba Service.

Location / Postal Address / Contact Details

Street address

South Western Sydney Local Health District Executive Office
Liverpool Hospital Eastern Campus
52 Scrivener Street (end of), Warwick Farm NSW 2170

Postal address

South Western Sydney Local Health District Executive Office
Locked Bag 7279, LIVERPOOL BC 1871

Phone: +61 2 9828 6000

Fax: +61 2 9828 6001

E-Mail: SWSLHD-ESU@health.nsw.gov.au

South Western Sydney Local Health District Board

E-Mail: SWSLHD-Board@health.nsw.gov.au

Hospital Switchboards

Bankstown Hospital: +61 2 9722 8000

Bowral Hospital: +61 2 4861 0200

Campbelltown and Camden Hospitals: +61 2 4634 3000

Fairfield Hospital: +61 2 9616 8111

Liverpool Hospital: +61 2 8738 3000

Organisational Structure

Ms Amanda Larkin is the Chief Executive of the South Western Sydney Local Health District (SWSLHD) which commenced operations on 1 January 2011. The establishment of Local Health Districts followed the NSW Government's support for National Health Reform.

SWSLHD has been set up in accordance with the National Health and Hospital Agreement. Local decision making is at the forefront of how the organisation will function, led by a professional Health District Board and Local Health District (LHD) Chief Executive.

Our Board

The SWSLHD Board is chaired by Mr Sam Haddad and the 12 Board members who bring a wealth of experience and local knowledge to the management of the LHD. Together, the Board and the Chief Executive are responsible for:

- Improving local patient outcomes and responding to issues that arise throughout our LHD.
- Monitoring the performance of our LHD against performance measures in the LHD Service Agreement.
- Delivering services and performance standards within an agreed budget, based on annual strategic and operating plans. This forms the basis of our LHD Service Agreement.
- Ensuring services are provided efficiently and accountably. Production of Annual Reports that are subject to State financial accountability and audit frameworks.
- Maintaining effective communication with local and state public health stakeholders.

The members of the Board are as follows:

Mr Sam Haddad (Chair)	Dr Matthew Gray
Mr John Roach	Mrs Nina Berry
Mr John Gordon	Dr David Abi-Hanna
Ms Christine Carriage	Dr Shameran Slewa-Younan
Professor Hugh Dickson	Ms Kerrie Murphy
Professor Neil Merrett	Mr Gary Reidy
	Mr Max Bosotti

Where We Fit

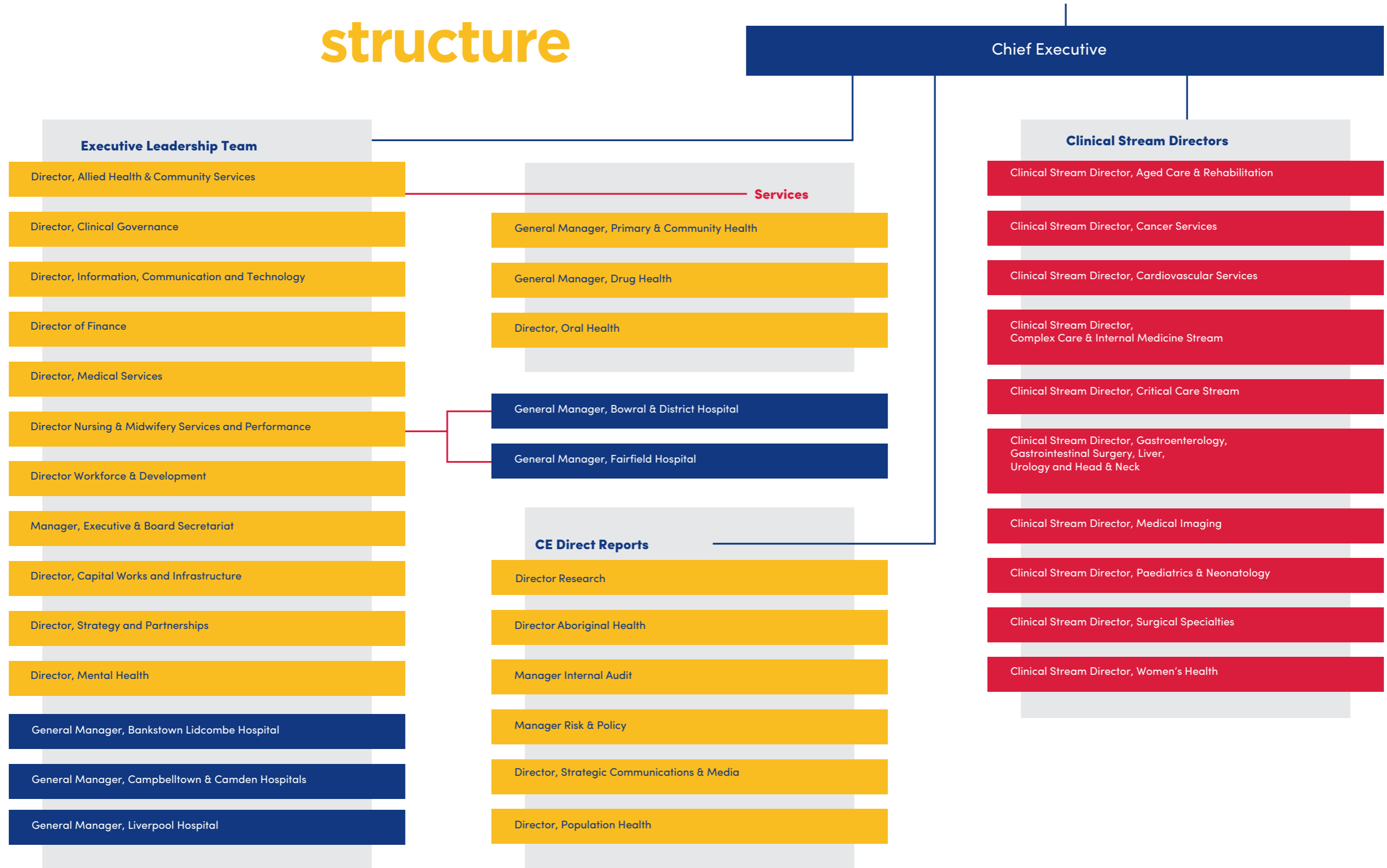
SWSLHD is part of the NSW public health system, NSW Health which is comprised of 15 local health districts, the Ambulance Service of NSW, Justice and Forensic Mental Health Network, Sydney Children's Hospital Network and St Vincents Health Network.

For further information about the structure of SWSLHD please visit:

<https://www.swslhd.health.nsw.gov.au/about.html>

Our governance structure

SWSLHD Board



Our Community

Together with the Board, the Chief Executive will take the views of patients, community and clinicians into account in developing and delivering services to meet the needs of the local community.

The following local facilities have Consumer and Community Participation (CCP) Meetings or structures for consultation and engagement, throughout the year, across SWSLHD:

- **Bankstown CCP Network**
- **Liverpool CCP Network**
- **Fairfield CCP Network**
- **Macarthur CCP Network**
- **Wingecarribee CCP Network**
- **Mental Health Services - MH Consumer, Carer and Community Committee (MHCCCC)**
- **Oral Health Service Consumer Consultative Committee (OHSCCC)**
- **Primary and Community Health CCP strategy and engagement group (critical friends)**

SWSLHD Consumer Community Council (CCC) monthly meetings focus on raising issues and working strategically on improving the quality and health care experience for the broader SWS community. It provides the peak consumer structure to oversight and advise all health consumer and community participation processes across SWSLHD. Members of the CCC include elected health consumers representatives from each of the five locally based forums and services and two representatives from the SWSLHD Board. The non-voting members include the SWSLHD's Chief Executive and the Manager of Consumer and Community Participation Unit.

To contact the CCC or CCP Unit in SWSLHD.

Ms Lynda Johnston

Local Health District Manager, Community Participation Unit

SWSLHD

Locked Bag 7279

Liverpool BC 1871

Ph: +61 2 8738 5783

Mob: 0408 969 127

Email: lynda.johnston@health.nsw.gov.au

For further information about Community Participation within SWSLHD please visit:

<https://www.swslhd.health.nsw.gov.au/ccp>

List of facilities that are part of South Western Sydney Local Health District:

Information on our Hospitals within SWSLHD is available at the following link :

<https://www.swslhd.health.nsw.gov.au/hospitals.html>

- Bankstown-Lidcombe Hospital
- Fairfield Hospital
- Bowral and District Hospital
- Liverpool Hospital
- Campbelltown and Camden Hospitals

Services

Information on our Services is available at the following link:

<https://www.swslhd.health.nsw.gov.au/services.html>

- Aboriginal Health Services
- Allied Health Services
- Community Health Services
- Drug Health Services
- Mental Health
- Oral Health
- Population Health

Other Facilities and Services

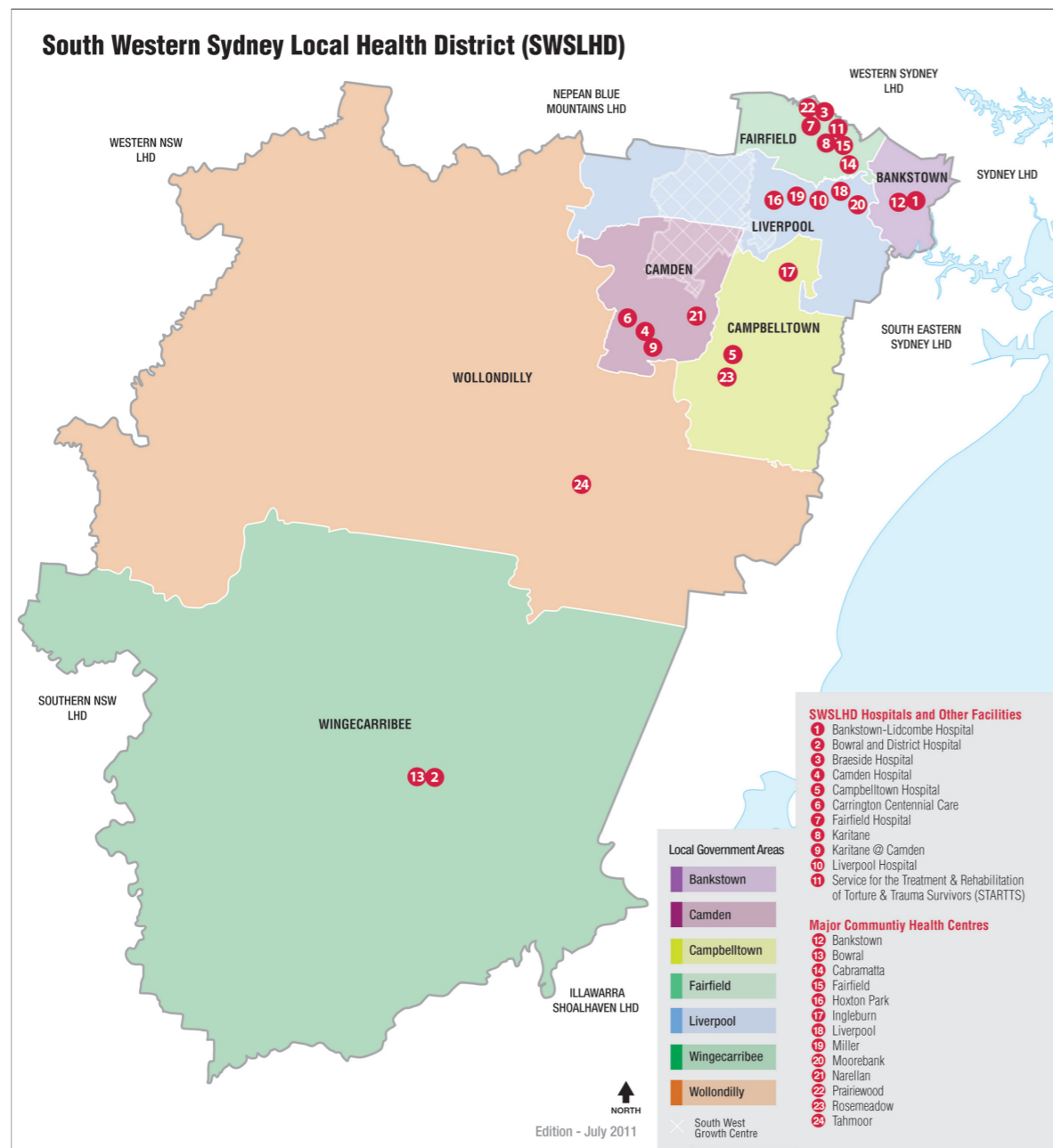
- Centre for Applied Nursing Research
- Department of Forensic Medicine
- Health Language Services
- NSW Statewide Centre for Improvement of Palliative Care (SCIP)
- Nursing Clinical Placement Unit
- Program of Experience in the Palliative Approach (PEPA)
- Sydney South West Pathology Service (SSWAPS)
- Visiting Practitioner Appointments
- NSW Refugee Health Service
- Health Services Planning
- Renal Services

Affiliated Health Services

- Braeside Hospital
- Carrington Centennial Care
- Karitane
- NSW Service for the Treatment and Rehabilitation of Torture and Trauma Survivors (STARTTS)
- SCARBA

Clinical Streams

- Aged Care and Rehabilitation
- Cancer Services
- Cardiovascular Services
- Carers Program - Information for Carers
- Complex Care and Internal Medicine
- Critical Care
- Gastroenterology and Liver
- Medical Imaging
- Neurosciences, Bone and Joint, Plastics and Trauma Surgery
- Paediatrics and Neonatology
- Women's Health



What kind of Government Information does SWSLHD have?

SWSLHD offers a variety of information about our District, hospitals and services at <https://www.swslhd.health.nsw.gov.au/default.html>.

Accessing SWSLHD Information

If the information required is not already available on the LHD website, access to the information may be considered through either an informal request, or as a formal application under the provisions of the *Government Information (Public Access) Act 2009*.

Informal access applications

A request may be made at any time for other information held by SWSLHD. While SWSLHD reserves the right to request a formal access application, the SWSLHD will generally provide the following types of information in response to an informal request, without the need to make a formal access application:

- Documents that contain only personal information about a particular individual, who is the same person requesting the information.
- Documents that have already been made public in some other way.
- Other reasonable requests for information, the release of which would not raise any potential concerns in terms of public interest considerations against disclosure and would not take an unreasonable amount of time to retrieve.

SWSLHD reserves the right to impose conditions in relation to the use or disclosure of information that is released in response to an informal request. There is no requirement to complete a formal access application and there is no application fee. In some situations, charges may be incurred for services such as photocopying or pixelation of CCTV footage.

Formal access applications

An access application may be made for all other information held by SWSLHD.

Applications for access to information under the provisions of the *Government Information (Public Access) Act 2009* should be in writing and accompanied by the \$30 application fee. If you are seeking access to personal information, your application must be accompanied by two forms of certified proof of identification of the person to whom the information belongs. The formal application form can be accessed on our website detailed below.

Formal and Informal applications should be directed to:

District Right to Information and Records Manager

South Western Sydney Local Health District
Locked Mail Bag 7279, LIVERPOOL BC NSW 1871

The Right to Information Unit can be contacted on:

Phone: +61 2 8738 5720

Email: SWSLHD-PrivacyGIPA@health.nsw.gov.au

Website: <https://www.swslhd.health.nsw.gov.au/right.html>

Information not disclosed

In some cases, open access information may not be released by SWSLHD due to an overriding public interest against disclosure pursuant to the *Government Information (Public Access) Act 2009*.

Where can I access my medical records?

Patient medical records are generally held by the individual hospitals within the LHD.

Medical records can be accessed under the GIPA Act but are generally accessed under the *Health Records and Information Privacy Act 2002 (HRIPA)*. The Medical Records Department in the relevant Hospital can help you apply for your medical record under HRIPA. Please contact the Hospital you attended to arrange access to your Medical Records. Contact information for each of the Medical Records Departments / Clinical Information Units for the LHD is available via the following link: https://www.swslhd.health.nsw.gov.au/h_access.html

Policies and Procedures

NSW Health policy directives and guidelines apply to all NSW Local Health Districts/Specialty Health Networks and copies of these documents can be found via the link below:

<https://www.health.nsw.gov.au/policies/manuals/Pages/default.aspx>

Copies of current SWSLHD developed policies, procedures and guidelines can be obtained by contacting the **Risk and Policy Unit**:

Phone: +61 2 8738 6867

Email: SWSLHD-Policy@health.nsw.gov.au

Contracts

Each LHD is required to keep a register of government contracts that record information about each contract that has, or is likely to have, a value of \$150,000 or more. Details concerning all NSW contracts are available at the [NSW eTendering website](#) via the following link:

<https://tenders.nsw.gov.au/>

Media enquiries

All media enquires and requests for information should be directed to the SWSLHD media unit in the first instance.

This includes patient condition enquires, requests to interview staff and requests for information or comment.

All communication between SWSLHD and the media will be coordinated through the media unit.

Media releases

All media releases are available via the following link:

https://www.swslhd.health.nsw.gov.au/media_mr.html

Contact the Media Unit

Phone: +61 2 8738 6848

Hours: 830am - 5pm

After Hours Mobile: 0417 697 079

Email: SWSLHD-Media@health.nsw.gov.au



SWSLHD

Agency Information Guide

Street address

South Western Sydney Local Health District Executive
Office Liverpool Hospital Eastern Campus
52 Scrivener Street (end of), Warwick Farm NSW 2170

Postal address

South Western Sydney Local Health District
Executive Office Locked Bag 7279, LIVERPOOL BC
1871

Phone: +61 2 8738 6000

Fax: +61 2 8738 6001

E-Mail: SWSLHD-ESU@health.nsw.gov.au

South Western Sydney Local Health District Board

E-Mail: SWSLHD-Board@health.nsw.gov.au